

MEMORANDUM

TO: Law Enforcement Agencies
Municipal Solid Waste Landfills

THROUGH: L. David Glatt, P.E., Director *LDG*
Department of Environmental Quality

FROM: Charles R. Hyatt, Director *CRH*
Division of Waste Management

SUBJECT: Disposal of Evidence

DATE: February 1, 2023

Introduction

In the summer of 2018, the North Dakota Department of Environmental Quality (department) received calls from various law enforcement agencies across North Dakota inquiring about options for disposal of evidence. Types of evidence include, but are not limited to, alcohol, animal carcasses, various drugs, infectious waste, vehicle parts, and weapons. A more detailed discussion on evidence is included in the section **Evidence Packaging and Types of Evidence**.

According to current guidance from the United States Drug Enforcement Administration (DEA) and the United States Environmental Protection Agency (EPA), the preferred method for disposal of drugs is incineration - when available. However, the incineration units must meet strict EPA regulations, and as a result, the number of operating incinerators throughout the United States is low. There are currently no incinerators operating in North Dakota approved to accept these materials, and disposal and/or destruction of evidence obtained by local, state and federal law enforcement agencies operating in North Dakota has become increasingly difficult. To enable law enforcement agencies to properly dispose of drugs, the department allows the option of proper disposal in municipal solid waste landfills (MSW).

The purpose of this memorandum is to establish evidence disposal protocol and procedures at MSW landfills in North Dakota for law enforcement agencies. Disposal of evidence at inert waste landfills or any other solid waste disposal facility is prohibited without prior approval from the department's Solid Waste Program. The types of evidence listed in the section **Evidence Packaging and Types of Evidence** are only for household quantities.

Incinerators

The department's Division of Air Quality is responsible for the permitting and compliance of incinerators. The North Dakota Air Pollution Control Rules regulating incinerators are found in North Dakota Administrative Code (NDAC) Section 33.1-15-05-03 and Section 33.1-15-12-02. Incineration units must meet strict EPA and state regulations. Hazardous waste incinerators and cement kilns that are permitted to burn hazardous waste are preferred due to the

comprehensive operating and monitoring controls required. However, there are few hazardous waste incinerators in the United States. When hazardous waste incinerators are not available, incinerators that meet EPA's and the state's large or small municipal waste combustor standards may be used for the disposal of drugs. Currently, there are no hazardous waste incinerators or municipal waste incinerators in North Dakota.

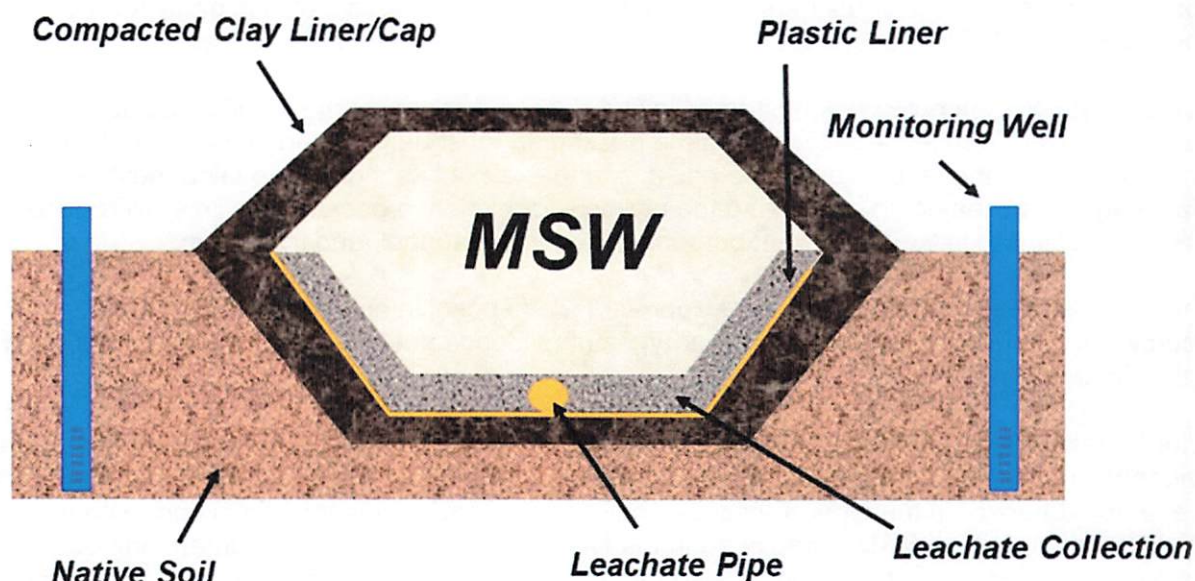
The Division of Air Quality has received calls regarding the use of other types of incinerators including portable incinerators for the disposal of drugs. The use of any other type of incinerator including portable incinerators is not allowed as they may not meet the strict standards set forth by EPA or the state. The department may consider approval on a limited case-by-case basis, however, the use of any other type of incinerator including portable incinerators must be approved by the Division of Air Quality prior to the use for disposing of drugs each time. In addition, if the other types of incinerators including portable incinerators are granted approval to dispose of drugs, any ash produced by an incinerator is considered a solid waste and must be characterized according to NDAC Section 33.1-24-03-02 (Hazardous Waste Determination). A Toxicity Characteristic Leaching Procedure (TCLP) must be conducted to determine if the ash exhibits the toxicity characteristic as defined in NDAC Section 33.1-24-02-14. If the ash is found to exceed any of the values listed in Table 1. Maximum Concentration of Contaminants for the Toxicity Characteristic, in NDAC Section 33.1-24-02-14, the waste is a hazardous waste and must be managed accordingly. For questions regarding management or disposal of hazardous waste, please contact the department's Hazardous Waste Program at 701-328-5166.

MSW Landfills

The department's Division of Waste Management – Solid Waste Program is responsible for the permitting and compliance of MSW landfills. The North Dakota Solid Waste Management Rules regulating MSW landfills are found in NDAC Article 33.1-20 and specifically NDAC Chapter 33.1-20-06.1. MSW landfills must meet strict state regulations regarding:

- Location restrictions (NDAC Section 33.1-20-04.1-01)
- Operations (NDAC Section 33.1-20-04.1-03)
- Design (NDAC Section 33.1-20-06.1-02) – see Figure 1 for a typical cross-section view of an MSW landfill
- Groundwater monitoring (NDAC Section 33.1-20-13-02)
- Closure and post-closure care (NDAC Section 33.1-20-06.1-03)
- Financial assurance (NDAC Chapter 33.1-20-14)

Figure 1. Typical Cross-Section View of an MSW Landfill



NDCC Subsection 23.1-08-02(10) defines municipal waste as the following:

“Municipal waste” means solid waste that includes garbage, refuse, and trash generated by households, motels, hotels, and recreation facilities; by public and private facilities; and by commercial, wholesale, and private and retail businesses. The term does not include special waste or industrial waste.

The types of evidence listed in the section **Evidence Packaging and Types of Evidence** are household waste not subject to the department’s Hazardous Waste rules in accordance with NDAC Subsection 33.1-24-02-04(2) which states in part:

2. **Solid wastes that are not hazardous wastes.** The following solid wastes are not hazardous wastes:
 - a. Household waste, including household waste that has been collected, transported, stored, treated, disposed, recovered, for example, refuse-derived fuel, or reused. “Household waste” means any waste material (including garbage, trash, and sanitary wastes in septic tanks) derived from households (including single and multiple residences, hotels, and motels), bunkhouses, ranger stations, crew quarters, campgrounds, picnic grounds, and day-use recreation area)...

It is strongly recommended that law enforcement dispose of evidence as soon as practicable to avoid larger concentrations of evidence in one area of the landfill. More frequent disposal is preferred, though not mandatory.

Evidence Packaging and Types of Evidence

Law enforcement agencies have a protocol for standardized evidence packaging that includes packages that can be sealed, opened for testing and resealed. The purpose of the packaging is

to preserve evidence and reduce the risk of exposure to law enforcement personnel and laboratory staff when handling the evidence. Packaging includes but is not limited to cardboard boxes, coverable plastic containers, glass sample jars, heat-sealable plastic bags, manila envelopes, metal paint cans, paper bags, paper envelopes, and resealable plastic Ziploc® bags.

Evidence packaging protocols must be followed prior to disposal at the landfill. Evidence must not be removed from its packaging, and the packaging must be intact and sealed for disposal. Prior to arrival at the landfill, evidence packaging that is not intact or is unsealed must be repackaged and sealed shut following the protocol for evidence packaging. This will reduce the risk of exposure to law enforcement personnel, landfill personnel, and the public.

The types of evidence listed below are approved for disposal in accordance with NDAC Subdivision 33.1-20-06.1-02(8)(a). Other types of evidence not listed below may be disposed of with prior approval from the department.

Prior to transporting evidence for disposal at an MSW landfill, law enforcement shall ensure that evidence is packaged in accordance with #5 in the **Disposal** section of this document unless it is exempted based on the type. Evidence shall be managed for disposal in accordance with the corresponding **Option (A-D)** listed in #6 in the **Disposal** section of this document and based on the type of evidence. Table 1 can be also used as a quick reference guide for the appropriate options for each evidence type listed below.

Alcoholic Beverages

Alcoholic beverages, including but not limited to glass containers and metal cans, are exempt from the evidence packaging requirements in #5 in the **Disposal** section and must be disposed of in accordance with either **Option A** or **B**.

Ammunition

Ammunition of any kind must be disposed of in accordance with **Option D**.

Animal Carcasses

Animal carcasses of any size or variety are exempt from the evidence packaging requirements in #5 in the **Disposal** section of this document and must be disposed of in accordance with **Option D**.

For animal infectious waste disposal options, please contact the department's Solid Waste Program at 701-328-5166.

Biohazardous Waste Material

Biohazardous waste material includes but is not limited to DNA evidence. See **Infectious Waste Material** for disposal options.

Disposal of pandemic (e.g. Ebola, Tuberculosis) contaminated waste material is prohibited in landfills without prior written approval from the department. For disposal options, please contact the department's Solid Waste Program at 701-328-5166.

Carfentanil or Carfentanyl

Carfentanil or carfentanyl comes in several forms including blotter paper, powder, sprays and tablets.

Carfentanil or carfentanyl in any form must be disposed of in accordance with **Option C**.

Chemicals

Chemicals of any kind should be disposed of in accordance with the chemical's safety data sheet (SDS). For questions regarding disposal of chemicals, please contact the department's Hazardous Waste Program at 701-328-5166.

Cocaine

Cocaine often appears as a fine, white, crystalline powder, although it can come in the form of crystals or a liquid.

Cocaine in any form must be disposed of in accordance with **Option C**.

Dangerous Weapons (Non-Explosives and Non-Firearms)

Dangerous weapon, as defined in NDCC Subsection 12.1-01-04(6), includes any switchblade or gravity knife, machete, scimitar, stiletto, sword, or dagger; any billy, blackjack, sap, bludgeon, cudgel, metal knuckles, or sand club; any slungshot; any bow and arrow, crossbow, or spear; any weapon that will expel, or is readily capable of expelling, a projectile by the action of a spring, compressed air, or compressed gas including any such weapon, loaded or unloaded, commonly referred to as a BB gun, air rifle, or CO2 gun; and any projector of a bomb or any object containing or capable of producing and emitting any noxious liquid, gas, or substance.

Dangerous weapons, excluding explosive compounds/devices and firearms, must be disposed of in accordance with **Option B**.

Drug Paraphernalia

Drug paraphernalia, as defined in NDCC Section 19-03.4-01, means all equipment, products, and materials of any kind which are used, intended for use, or designed for use in planting, propagating, cultivating, growing, harvesting, manufacturing, compounding, converting, producing, processing, preparing, testing, analyzing, packaging, repackaging, storing, containing, concealing, injecting, ingesting, inhaling, or otherwise introducing into the human body a controlled substance in violation of chapter 19-03.1.

Only household quantities of drug paraphernalia including electronic nicotine delivery systems (also known as electronic or E-cigarettes) and associated vaping liquid cartridges, may be disposed of and must be disposed of in accordance with **Option B**.

Disposal of pandemic (e.g. Ebola, Tuberculosis) contaminated waste material is prohibited in landfills without prior written approval from the department. For disposal options, please contact the department's Solid Waste Program at 701-328-5166.

Ecstasy

Methylenedioxymethamphetamine (MDMA), better known as Ecstasy or E, usually comes in tablet form; however, it can also come as a salt, loose or crushed crystals, gelcaps or a liquid.

See **Synthetics** for disposal options.

Explosive Compounds/Devices

Destructive device, as defined in NDCC Subsection 12.1-01-04(7), means any explosive, incendiary or poison gas bomb, grenade, mine, rocket, missile, or similar device.

Explosive, as defined in NDCC Subsection 12.1-01-04(8), means gunpowders, powders used for blasting, all forms of high explosives, blasting materials, fuses (other than electric circuit breakers), detonators and other detonating agents, smokeless powders, and any chemical compounds, mechanical mixture, or other ingredients in such proportions, quantities, or packing that ignition by fire, by friction, by concussion, by percussion, or by detonation of the compound, or material, or any part thereof may cause an explosion.

Explosive compounds and/or explosive devices of any kind are prohibited from disposal in landfills. Some MSW landfills may allow law enforcement to utilize the facility for the safe detonation of explosive compounds/devices; please see the attached list.

Fentanyl

Fentanyl can come in a liquid, lozenges, powder, spiked on blotter paper, tablets or transdermal patches.

Fentanyl in any form must be disposed of in accordance with **Option C**.

Firearms

Firearms, as defined in NDCC Subsection 12.1-01-04(9), means any weapon that will expel, or is readily capable of expelling, a projectile by the action of an explosive and includes any such weapon, loaded or unloaded, commonly referred to as a pistol, revolver, rifle, gun, machine gun, shotgun, bazooka, or cannon.

Firearms of any kind are prohibited from disposal in landfills unless rendered inoperable by law enforcement prior to disposal. Firearms rendered inoperable must be disposed of in accordance with **Option A**.

Fireworks

Fireworks are exempt from the packaging requirements in #5 in the **Disposal** section of this document and may be disposed of in accordance with **Option C**.

Heroin

Heroin can be a liquid, a powder (black, brown, rose gray or white) or a black sticky substance known as black tar heroin.

Heroin in any form must be disposed of in accordance with **Option C**.

Infectious Waste Material

Infectious waste (also known as biohazardous waste) material and potentially infectious waste includes materials that contain blood, whether dried or wet, needles and other paraphernalia, and they must be disposed of in accordance with **Option B**.

Disposal of pandemic (e.g. Ebola, Tuberculosis) contaminated waste material is prohibited in landfills without prior written approval from the department. For disposal options, please contact the department's Solid Waste Program at 701-328-5166.

For animal infectious waste disposal options, please contact the department's Solid Waste Program at 701-328-5166.

LSD

Lysergic acid diethylamide, better known as LSD, can come in the form of absorbent paper, capsules, crystals, gelatin squares, liquid and small tablets.

LSD in any form must be disposed of in accordance with **Option C**.

Marijuana

Marijuana appears as a brown, gray or green mixture of dried, shredded leaves, stems, seeds and flowers. It can also include sinsemilla, hashish and resins such as hash oil and a wax similar to lip balm. Marijuana and other forms can also come in edibles, oils, sprays and tinctures.

Marijuana, including hemp, and other forms, including but not limited to edibles, hash, hash oil and tetrahydrocannabinol (THC) oil, must be disposed of in accordance with **Option B**.

Methamphetamine

Methamphetamine, also known as meth, usually comes in the form of a crystalline white power; however, it can come in other colors such as brown, orange, pink or yellow-gray. It can come in pill or tablet form or as a liquid. Crystal meth usually comes in clear, chunky crystals.

Methamphetamine in any form must be disposed of in accordance with **Option C**.

For questions regarding meth lab clean-up and disposal options, please contact the Hazardous Waste Program and the Solid Waste Program at 701-328-5166.

Mushrooms

Psychoactive fungi, better known as hallucinogenic mushrooms, can come in fresh form, treated/preserved, or as dry powders or capsules. Most psychoactive fungi are small, brown or tan mushrooms.

Psychoactive fungi in any form must be disposed of in accordance with **Option B**.

Needles and Syringes

See **Drug Paraphernalia and Infectious Waste Material** for disposal options.

Disposal of pandemic (e.g. Ebola, Tuberculosis) contaminated waste material is prohibited in landfills without prior written approval from the department. For disposal options, please contact the department's Solid Waste Program at 701-328-5166.

Paper Files

Paper files, including shredded paper, are exempt from the packaging requirements in #5 in the **Disposal** section of this document and may be disposed of in accordance with **Option A**.

PCP

Phencyclidine, better known as PCP, is a white crystalline powder that can come in a variety of colors in a capsule, pill, powder or tablet form. It can also be a liquid.

PCP in any form must be disposed of in accordance with **Option C**.

Prescription Medications - Seized

Prescription medications in any form must be disposed of in accordance with either **Option B** or **C**.

Prescription Medications - Take Back Programs

Prescription medications from take back programs in any form are exempt from the packaging requirements in #5 in the **Disposal** section of this document and must be disposed of in accordance with either **Option B** or **C**.

Pull Tabs

Pull tabs are a gambling card. Pull tabs are exempt from the packaging requirements in #5 in the **Disposal** section of this document and may be disposed of in accordance with **Option A**.

Synthetics

Synthetics, including but not limited to bath salts, ecstasy and marijuana, can come in many forms including herbs, liquid, pills, powder and tablets.

Synthetics in any form must be disposed of in accordance with **Option C**.

Tobacco

Tobacco and tobacco products come in many forms, including but not limited to cigars, cigarettes, smokeless tobacco, pipe tobacco and roll-your-own tobacco.

Tobacco in any form is exempt from the evidence packaging requirements in #5 in the **Disposal** section and must be disposed of in accordance with either **Option A** or **B**.

Vehicle Parts

Vehicle parts, including but not limited to headlights, seat belts and tail lights, are exempt from the packaging requirements in #5 in the **Disposal** section of this document and may be disposed of in accordance with **Option A**.

Table 1. Disposal Options for Types of Evidence

Option A	Option B	Option C	Option D
Alcoholic Beverages	Alcoholic Beverages	Carfentanil or Carfentanyl	Ammunition
Firearms	Biohazardous Waste Material	Cocaine	Animal Carcasses
Paper Files	Dangerous Weapons (Non-Firearms)	Ecstasy	
Pull Tabs	Drug Paraphernalia	Fentanyl	
Tobacco	Infectious Waste Material	Fireworks	
Vehicle Parts	Marijuana	Heroin	
	Mushrooms	LSD	
	Needles and Syringes	Methamphetamine	
	Prescription Medications - Seized	PCP	
	Prescription Medications - Take Back Programs	Prescription Medications - Seized	
	Tobacco	Prescription Medications - Take Back Programs	
		Synthetics	

Disposal

Disposal of evidence (household quantities) is only allowed under the following conditions:

1. Evidence may only be disposed of in MSW landfills that are willing to accept it and agree to follow the conditions contained in this memorandum. Law enforcement shall contact the landfill to schedule an appointment prior to bringing evidence on site for disposal. In the case of an emergency, the landfill should be notified as soon as possible.

Attached is a list of MSW landfills, including contact information and the types of waste each landfill will accept and not accept. The department will update the list annually.

2. No evidence may be disposed of via placement in dumpsters, balers and/or trash compactors. All evidence must be disposed of in the landfill designated area.
3. All evidence must be accompanied by law enforcement for disposal at the landfill. The evidence must be immediately disposed of in the presence of law enforcement, including the placement of cover material over the evidence. Law enforcement must be satisfied that the evidence has been rendered non-accessible.
4. Salvaging/scavenging of evidence and marking/recording the location (e.g. using GPS to mark the location) of evidence is prohibited and may not be approved by the MSW landfill in accordance with NDAC Section 33.1-20-04.1-09.
5. Law enforcement agencies must have a protocol for standardized evidence packaging, and the protocols must be followed prior to disposal at the landfill. Evidence must **NOT** be removed from its packaging, and the packaging must be intact and sealed for disposal.

Prior to arrival at the landfill, evidence packaging that is not intact or is unsealed must be repackaged and sealed shut by law enforcement following protocol.

6. Evidence may be commingled for disposal provided the following disposal options are used. The disposal option will depend on the type of evidence, and the appropriate option for each type can be found in the **Evidence Packaging and Types of Evidence** section or in Table 1 of this document. If commingled evidence is subject to more than one disposal option, the most protective disposal option should be chosen.

For all disposal options, the evidence shall be placed in the designated spot as determined by the landfill. All disposal options must be conducted in the presence of law enforcement.

Option A

Packaged evidence is placed into a trash bag or other container, such as a box, plastic tote or bucket, and is taken to the landfill.

A landfill compactor or other piece of heavy equipment shall be driven directly over the evidence a minimum of three passes. When the landfill compactor has completed the three passes, law enforcement shall be given the opportunity to visually ensure the evidence has been crushed. Once law enforcement is satisfied, the landfill shall immediately place 1 foot of other MSW waste or cover material on top of the evidence.

Option B

Prior to transporting for disposal, packaged evidence is placed into container(s) which do not leak, are impervious, and are puncture and tear resistant.

A landfill compactor or other piece of heavy equipment shall be used to place a layer of MSW waste or cover material at least 2 feet thick over the evidence prior to running directly over the evidence a minimum of three passes. When the landfill compactor has completed the three passes, law enforcement shall be given the opportunity to visually ensure the evidence has been crushed. Once law enforcement is satisfied, the landfill

shall immediately place an additional 2 feet of other MSW waste or cover material on top of the evidence.

Option C

Prior to transporting for disposal, packaged evidence is placed into container(s) which do not leak, are impervious, and are puncture and tear resistant. Evidence may not fill the container greater than half-full (50 percent) by volume. Upon arrival at the landfill, the container should be filled full of waste paint (if available), other undesirable material (e.g. leachate, biosolids, sludge, etc.) or water and sealed shut. Contact the landfill to see if waste paint is available.

A landfill compactor or other piece of heavy equipment shall place a layer of MSW waste or cover material at least 2 feet thick over the evidence prior to running directly over the evidence a minimum of three passes. When the landfill compactor has completed the three passes, law enforcement shall be given the opportunity to visually ensure the evidence has been crushed. Once law enforcement is satisfied, the landfill shall immediately place an additional 2 feet of other MSW waste or cover material on top of the evidence.

Option D

Evidence that consists of animal carcasses shall be brought to the landfill and disposed of in accordance with NDAC Subsection 33.1-20-06.1-02(7).

Evidence that consists of household pet animal carcasses may be buried along with other municipal waste. The evidence shall be placed in the designated spot as determined by the landfill. A landfill compactor or other piece of heavy equipment shall place a thin layer of MSW waste over the evidence prior to running directly over the evidence a minimum of three passes. When the landfill compactor has completed the three passes, law enforcement shall be given the opportunity to visually ensure the evidence has been crushed. Once law enforcement is satisfied, the landfill shall immediately place an additional 1 foot of other MSW waste or cover material on top of the evidence.

Evidence that consists of ammunition or larger animal carcasses must be disposed of immediately. The landfill shall dig a hole at least 4 feet below grade, the evidence shall be placed in the designated spot as determined by the landfill, and the landfill shall immediately place at least 1 foot of cover material directly over the evidence. A landfill compactor or other piece of heavy equipment shall run directly over the evidence a minimum of three passes. When the landfill compactor has completed the three passes, law enforcement shall be given the opportunity to visually ensure the evidence has been crushed. Once law enforcement is satisfied, the landfill shall immediately place 1 foot of other MSW waste or cover material on top of the evidence.

For additional information or any questions, please contact the department's Solid Waste Program Manager at 701-328-5166.

LDG:CRH:dat
Attach.

Municipal Solid Waste (MSW) Landfills
Updated February 2023

MSW Landfill	Contact	Areas Accepted	Tipping Fee	Evidence Types Accepted	Evidence Types Not Accepted	Explosive Compounds and Explosive Devices
Bismarck Landfill (Permit 0017) 2111 N. 52 nd St. Bismarck, ND 58506	Toby Sheldon (701) 220-5032	No restrictions	Min. charge \$3 (10-15 pounds)	Alcoholic Beverages Ammunition Animal Carcasses Biohazard Waste Material Chemicals Dangerous Weapons Firearms Fireworks Infectious Waste Material Marijuana Mushrooms Paper Files Pull Tabs Tobacco Vehicle Parts	Carfentanil/Carfentanyl Cocaine Drug Paraphernalia Ecstasy Fentanyl Heroin LSD Methamphetamine Needles/Syringes PCP Prescription Medications Synthetics	Contact the facility for possible use of area for detonation
Dickinson Landfill (Permit 0315) 3880 Lehigh Rd. Dickinson, ND 58601	Aaron Praus (1 st) (701) 456-7840 Josh Olheiser (2 nd) (701) 290-2039 Rachel Shumaker (3 rd) (701) 456-7873	No restrictions	No charge for local agencies	Alcoholic Beverages Ammunition Animal Carcasses Biohazard Waste Material Carfentanil/Carfentanyl Chemicals Cocaine Dangerous Weapons Drug Paraphernalia Ecstasy Fentanyl Firearms Fireworks Heroin Infectious Waste Material LSD Marijuana Methamphetamine Mushrooms Needles/Syringes Paper Files PCP Prescription Medications Pull Tabs Synthetics Tobacco Vehicle Parts	No restrictions	Contact the facility for possible use of area for detonation

Municipal Solid Waste (MSW) Landfills
Updated February 2023

MSW Landfill	Contact	Areas Accepted	Tipping Fee	Evidence Types Accepted	Evidence Types Not Accepted	Explosive Compounds and Explosive Devices
Fargo Landfill (Permit 0260) 4501 7 th Ave. N. Fargo, ND 58102	Scott Anderson (701) 476-5955 (w) (701) 730-8706 (c)	Cass County only, other areas if pre- approved	Min. charge \$12	Alcoholic Beverages Ammunition Animal Carcasses Biohazard Waste Material Chemicals Cocaine Dangerous Weapons Drug Paraphernalia Ecstasy Firearms Fireworks Heroin Infectious Waste Material LSD Marijuana Methamphetamine Mushrooms Needles/Syringes Paper Files PCP Pull Tabs Synthetics Tobacco Vehicle Parts	Carfentanil/Carfentanyl Fentanyl Prescription Medications	Facility may not be used for detonation
Grand Forks Landfill (Permit 0347) 5500 54 th Ave. N. Grand Forks, ND 58203	Sharon Lipsh (1 st) (701) 738-8891 Brent Olmstead (2 nd) (701) 330-3506	Region bounded by Devils Lake, Hillsboro, Thief River Falls, MN and Park River	Min. charge \$20 (special waste rate) up to 1 ton	Alcoholic Beverages Animal Carcasses Biohazard Waste Material Chemicals Cocaine Dangerous Weapons Drug Paraphernalia Ecstasy Firearms Heroin Infectious Waste Material LSD Marijuana Methamphetamine Mushrooms Needles/Syringes Paper Files PCP Prescription Medications Pull Tabs Synthetics Tobacco Vehicle Parts	Ammunition Carfentanil/Carfentanyl Fentanyl Fireworks	Contact the facility for possible use of area for detonation

Municipal Solid Waste (MSW) Landfills
Updated February 2023

MSW Landfill	Contact	Areas Accepted	Tipping Fee	Evidence Types Accepted	Evidence Types Not Accepted	Explosive Compounds and Explosive Devices
Jamestown Landfill (Permit 0213) 8980 35 th St. SE Jamestown, ND 58401	Shawn O'Neill – 1 st (701) 320-3126 Ryan Schafman – 2 nd (701) 659-3646 (c) (701) 252-5223 (scale)	Barnes, Dickey, Foster, Griggs, Kidder, LaMoure, Logan, McIntosh, Stutsman, and Wells Counties	No charge for local agencies	Alcoholic Beverages Ammunition Animal Carcasses Biohazard Waste Material Cocaine Dangerous Weapons Drug Paraphernalia Ecstasy Firearms Fireworks Heroin Infectious Waste Material LSD Marijuana Methamphetamine Mushrooms Needles/Syringes Paper Files PCP Prescription Medications Pull Tabs Synthetics Tobacco Vehicle Parts	Carfentanil/Carfentanyl Chemicals Fentanyl	Contact the facility for possible use of area for detonation
McKenzie County Landfill (Permit 0336) 13240 25 th St. NW Arnegard, ND 58835	Rick Schreiber (701) 586-3445 (w) (701) 570-1097 (c)	*No restrictions *Requires 24-hour advanced notice	Min. charge \$20 for McKenzie County, may have additional charge for outside the county	Alcoholic Beverages Ammunition Animal Carcasses Biohazard Waste Material Carfentanil/Carfentanyl Chemicals Cocaine Dangerous Weapons Drug Paraphernalia Ecstasy Fentanyl Firearms Fireworks Heroin Infectious Waste Material LSD Marijuana Methamphetamine Mushrooms Needles/Syringes Paper Files PCP Prescription Medications Pull Tabs Synthetics Tobacco Vehicle Parts	No restrictions	Contact the facility for possible use of area for detonation

Municipal Solid Waste (MSW) Landfills
Updated February 2023

MSW Landfill	Contact	Areas Accepted	Tipping Fee	Evidence Types Accepted	Evidence Types Not Accepted	Explosive Compounds and Explosive Devices
Mercer County Landfill (Permit 0337) 5251 Co. Rd. 26 Hazen, ND 58545	Candace Strand (701) 880-0484	No restrictions	Min. charge \$20 for waste \$5 per small animal \$10 per large animal	Alcoholic Beverages Ammunition Animal Carcasses Biohazard Waste Material Carfentanil/Carfentanyl Chemicals Cocaine Dangerous Weapons Drug Paraphernalia Ecstasy Fentanyl Firearms Fireworks Heroin Infectious Waste Material LSD Marijuana Methamphetamine Mushrooms Needles/Syringes Paper Files PCP Prescription Medications Pull Tabs Synthetics Tobacco Vehicle Parts	No restrictions	Contact the facility for possible use of area for detonation
Minot Landfill (Permit 0272) 3550 19 th Ave. SW Minot, ND 58701	Josh Kraft (1 st) (701) 857-4144 Allen Shefstad (2 nd) (701) 833-6474	Bottineau, McHenry, Mountrail, Pierce, Renville, and Ward Counties	No charge for agencies within the counties accepted	Alcoholic Beverages Ammunition Animal Carcasses Biohazard Waste Material Carfentanil/Carfentanyl Chemicals Cocaine Dangerous Weapons Drug Paraphernalia Ecstasy Fentanyl Firearms Fireworks Heroin Infectious Waste Material LSD Marijuana Methamphetamine Mushrooms Needles/Syringes Paper Files PCP Prescription Medications Pull Tabs Synthetics Tobacco Vehicle Parts	No restrictions	Contact the facility for possible use of area for detonation

Municipal Solid Waste (MSW) Landfills
Updated February 2023

MSW Landfill	Contact	Areas Accepted	Tipping Fee	Evidence Types Accepted	Evidence Types Not Accepted	Explosive Compounds and Explosive Devices
Noonan Landfill (Permit 0353) 10080 Co. Rd. 21 Noonan, ND 58765	Joe Ruby (701) 705-1375 (Cell) (701) 925-1375 (Office)	No restrictions	\$10 per pick-up load, may be less depending on quantity	Alcoholic Beverages Ammunition Animal Carcasses Biohazard Waste Material Carfentanil/Carfentanyl Chemicals Cocaine Dangerous Weapons Drug Paraphernalia Ecstasy Fentanyl Firearms Fireworks Heroin Infectious Waste Material LSD Marijuana Methamphetamine Mushrooms Needles/Syringes Paper Files PCP Prescription Medications Pull Tabs Synthetics Tobacco Vehicle Parts	No restrictions	Contact the facility for possible use of area for detonation
WM – Dakota Landfill (Permit 0257) 7972 129 th Ave. SE Gwinner, ND 58040	Matthew Miranda (1 st) (503) 871-0263 Ray Seegers (2 nd) (920) 377-0970	Minnesota, Montana, North Dakota and South Dakota	3-ton min. charge	Animal Carcasses Paper Files Pull Tabs Tobacco Vehicle Parts	Alcoholic Beverages Ammunition Biohazard Waste Material Carfentanil/Carfentanyl Chemicals Cocaine Dangerous Weapons Drug Paraphernalia Ecstasy Fentanyl Firearms Fireworks Heroin Infectious Waste Material LSD Marijuana Methamphetamine Mushrooms Needles/Syringes PCP Prescription Medications Synthetics	Facility may not be used for detonation

Municipal Solid Waste (MSW) Landfills
Updated February 2023

MSW Landfill	Contact	Areas Accepted	Tipping Fee	Evidence Types Accepted	Evidence Types Not Accepted	Explosive Compounds and Explosive Devices
<p>WM – McDaniel Landfill (Permit 0326)</p> <p>12300 247th Ave. SE Sawyer, ND 58781</p>	<p>Matthew Miranda (1st) (503) 871-0263</p> <p>Ray Seegers (2nd) (920) 377-0970</p>	<p>Minnesota, Montana, North Dakota and South Dakota</p>	<p>3-ton min. charge</p>	<p>Animal Carcasses Paper Files Pull Tabs Tobacco Vehicle Parts</p>	<p>Alcoholic Beverages Ammunition Biohazard Waste Material Carfentanil/Carfentanyl Chemicals Cocaine Dangerous Weapons Drug Paraphernalia Ecstasy Fentanyl Firearms Fireworks Heroin Infectious Waste Material LSD Marijuana Methamphetamine Mushrooms Needles/Syringes PCP Prescription Medications Synthetics</p>	<p>Facility may not be used for detonation</p>
<p>Williston Landfill (Permit 0303)</p> <p>5176 134th Ave. NW Williston, ND 58801</p>	<p>Julie Hatter (1st) (701) 580-1210</p> <p>Gina Motl (2nd) (701) 570-9618</p>	<p>No restrictions</p>	<p>No charge for local agencies (Williams County), other agencies call for pricing</p>	<p>Alcoholic Beverages Ammunition Animal Carcasses Biohazard Waste Material Carfentanil/Carfentanyl Chemicals Cocaine Dangerous Weapons Drug Paraphernalia Ecstasy Fentanyl Firearms Fireworks Heroin Infectious Waste Material LSD Marijuana Methamphetamine Mushrooms Needles/Syringes Paper Files PCP Prescription Medications Pull Tabs Synthetics Tobacco Vehicle Parts</p>	<p>No restrictions</p>	<p>Contact the facility for possible use of area for detonation</p>